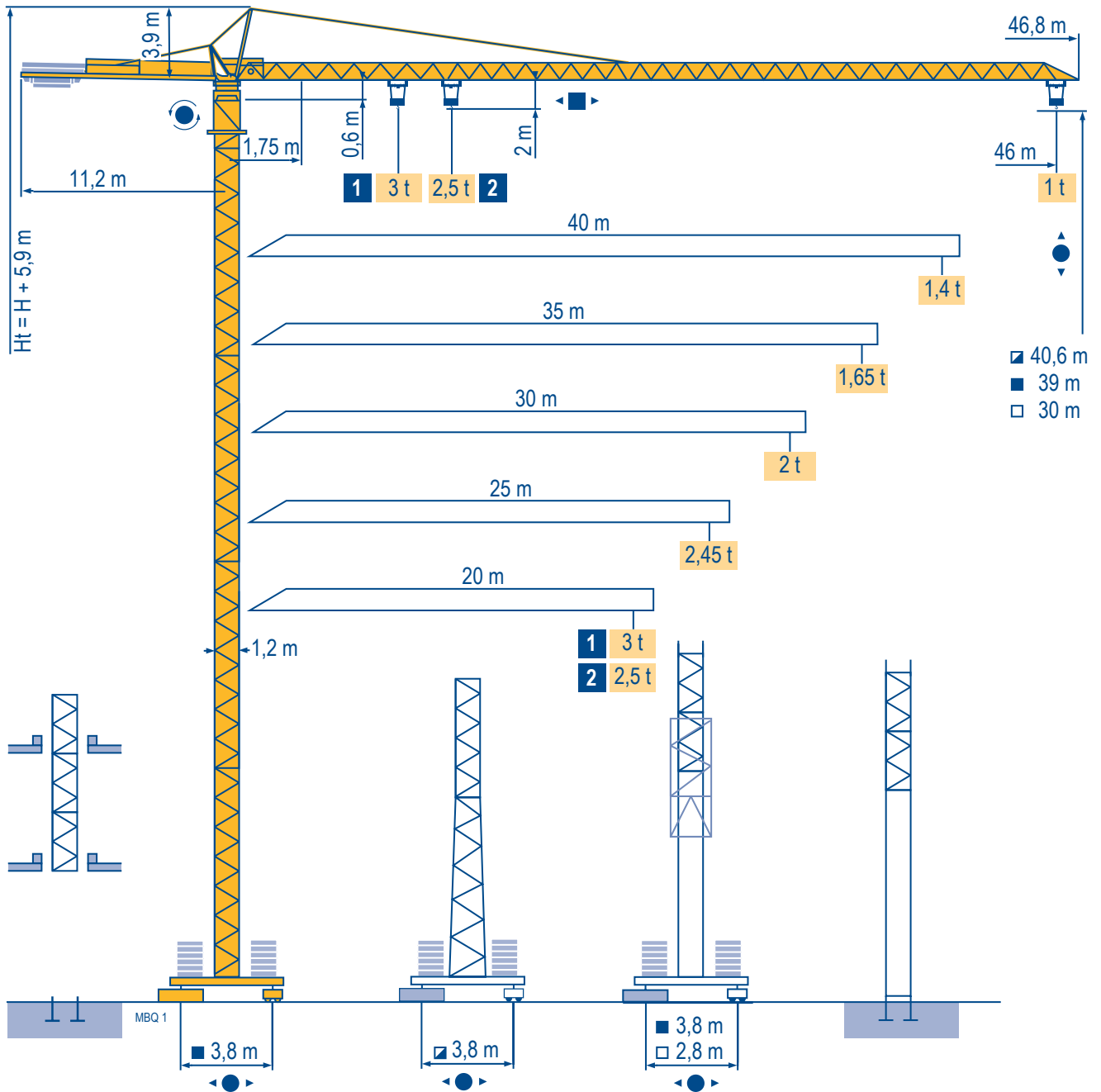


MC 68 C

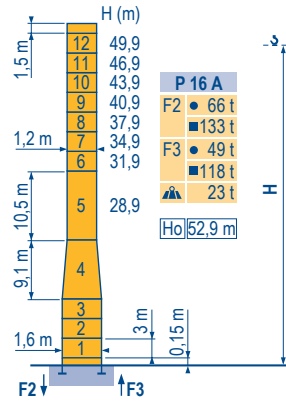
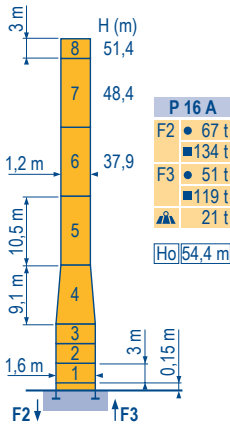
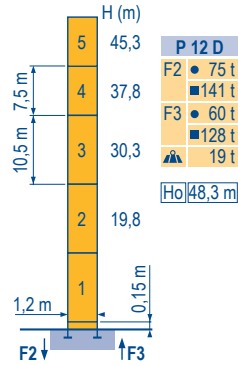
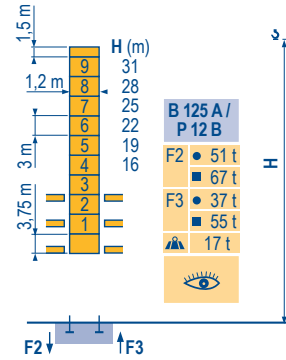
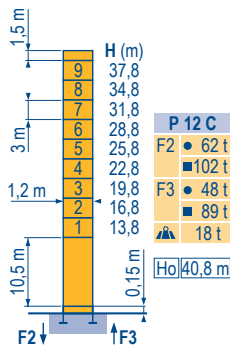
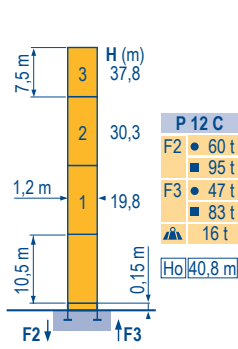


CITY CRANE

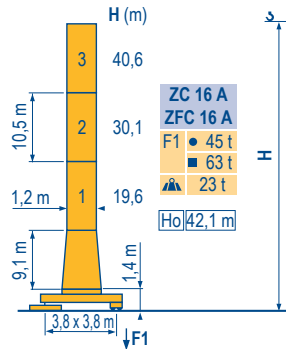
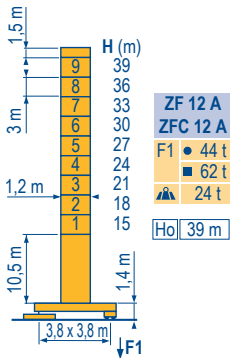
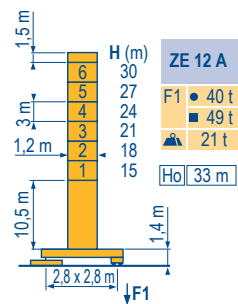
CE FEM 1.001-A3

Mat / Réactions □ 1,2 m
 Mast / Eckdrücke ▣ 20 m ⇒ 46 m
 Masts / Reactions
 Mástil / Reacciones
 Torre / Reazioni
 Tramo / Reações

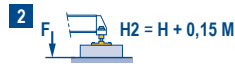
MBQ 1



□ 1,2 m
 ▣ 20 m ⇒ 46 m



ZE - ZF - ZC - ZFC



CITY CRANE
 MC 68 C



F	D	GB	E	I	P
● Réactions en service	● Reaktionskräfte in Betrieb	● Reactions in service	● Reacciones en servicio	● Reazioni in servizio	● Reações em serviço
■ Réactions hors service	■ Reaktionskräfte außer Betrieb	■ Reactions out of service	■ Reacciones fuera de servicio	■ Reazioni fuori servizio	■ Reações fora de serviço
▣ A vide sans lest (ni train de transport) avec flèche et hauteur maximum.	▣ Ohne Last, Ballast (und Transportachse), mit Maximalausleger und Maximalhöhe.	▣ Without load, ballast (or transport axes), with maximum jib and maximum height.	▣ Sin carga, sin lastre, (ni tren de transporte), flecha y altura máxima.	▣ A vuoto, senza zavorra (ne assali di trasporto) con braccio massimo e altezza massima.	▣ Sem carga (nem trem de transporte) - sem lastro com lança e altura máximas.
Ho H sans cabine	Ho H Ohne Fahrerhaus	Ho H without cab	Ho H sin cabina	Ho H senza cabina	Ho H sem cabine

Mécanismes
Antriebe
Mechanisms
Mecanismos
Meccanismi
Mecanismos

MBQ 3

						ch - PS hp	kW	
▲ ▼	15 PC 13-5	m/min	7,1	21	42	15	11	130 m
		t	2,5	2,5	1,3			
	25 PC 13-7	m/min	7,9	31,5	63	25	18	229 m
		t	2,5	2,5	1,3			
	20 LVF 13	m/min	5 →	31 →	57 →	20	15	230 m
		t	2,5	2,5	1,3			
15 PC 15	m/min	6	18	36	15	11	130 m	
	t	3	3	1,5				
25 PC 15	m/min	7	27,5	55	25	18	206 m	
	t	3	3	1,5				
◀ ▶	3 D2 V5	m/min	21 - 42			3	2,2	
	RCV 40	tr/min U/min rpm	0 → 0,8			6	4,5	
	TVD 324	m/min	26			2 x 4	2 x 2,9	
	RT 224	m/min	25			2 x 4	2 x 2,9	
		CEI 38	IEC 38		kVA			
		400 V (+6% -10%) 50 Hz		15 PC : 25 KVA 25 PC : 35 KVA 20 LVF : 30 KVA				

F

Levage
Distribution
Orientation
Translation

D

Heben
Katzfahren
Schwenken
Kranfahren

GB

Hoisting
Trolleying
Slewing
Travelling

E

Elevación
Distribución
Orientación
Traslación

I

Sollevamento
Distribuzione
Rotazione
Traslazione

P

Elevação
Distribuição
Rotação
Translação



Document commercial non contractuel. Pour toute information technique se référer à la notice correspondante.

Unverbindliches Vertriebsdokument. Für technische Informationen, siehe die entsprechenden Anweisungen.

This commercial document is not legally binding. For any technical information, please refer to the corresponding instructions.

Documento comercial no contractuel. Para cualquier información técnica, ver la noticia correspondiente.

Documento commerciale non vincolante, per tutte le informazioni tecniche fare riferimento al catalogo istruzioni.

Documento comercial não contractual. Para qualquer informação técnica complementar consultar as respectivas instruções.

Manitowoc
Crane CARE

POTAIN
Manitowoc Crane Group



Americas

Tel : +1 888 479 7278
Tel : +1 717 593 2000

Europe - Middle East - Africa

Tel : +33 (0) 4 72 81 50 00
Tel : +44 (0) 191 522 2000

Asia - Pacific

Tel : +65 6264 1188
Fax : +65 6862 4040

www.manitowoccrane.com

18, rue de Charbonnières - B.R.173
69132 ECULLY Cedex - France

Tel. : +33 (0) 4 72 18 20 20
Fax. : +33 (0) 4 72 18 20 00
www.manitowoccrane.com

CITY CRANE MC 68 C

Code S-89985-13_Ref. 2004 42 MBQ 5

Copyright.Reproduction interdite © POTAIN 2004

Réalisation Secotec